



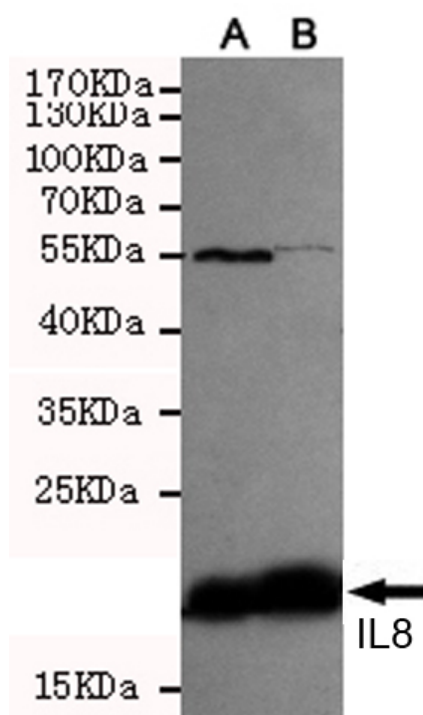
IL-8 mouse mAb

Catalog No	YP-Ab-15854
Isotype	IgG
Reactivity	Human
Applications	WB;ELISA
Gene Name	il8
Protein Name	
Immunogen	Purified recombinant human IL8 protein fragments expressed in E.coli.
Specificity	This antibody detects over-expressed and recombinant levels of IL8 and does not cross-react with related proteins.
Formulation	Liquid in PBS containing 50% glycerol, 0.5% BSA and 0.02% sodium azide.
Source	Monoclonal, Mouse
Purification	The antibody was affinity-purified from mouse ascites by affinity-chromatography using epitope-specific immunogen.
Dilution	wb 1:500
Concentration	1 mg/ml
Purity	≥90%
Storage Stability	-20°C/1 year
Synonyms	(Ala-IL-8)77;(Ser-IL-8)72;3 10C;310C;AMCF 1;AMCF1;b ENAP;Bbeta thromboglobulin like protein;Beta thromboglobulin like protein;C-X-C motif chemokine 8;CXC chemokine ligand 8;CXCL 8;CXCL8;Emoctakin;GCP 1;GCP-1;GCP/IL-8 protein I;GCP/IL-8 protein II;GCP/IL-8 protein III;GCP/IL-8 protein IV;GCP/IL-8 protein V;GCP/IL-8 protein VI;GCP1; Granulocyte chemotactic protein 1;IL 8;IL-8;IL-8(1-77);IL-8(9-77);IL8;IL8/NAP1 form I;IL8/NAP1 form II;IL8/NAP1 form III;IL8/NAP1 form IV;IL8/NAP1 form V;IL8/NAP1 form VI;IL8_HUMAN; Interleukin 8;Interleukin8;K 60;K60;LECT;LUCT; Lymphocyte derived neutrophil activating factor;Lymphocyte-derived neutrophil-activating factor;LYNAP;MDNCF;MDNCF-b;MDNCF-c; MONAP;Monocyte derived neutrophil activating peptide;Monocyte derived neutrophil activating protein; Monocyte derived neutrophil chemotactic factor;Monocyte-derived neutrophil chemotactic factor;Monocyte-derived neutrophil-activating peptide;NAF;NAP 1; NAP-1;NAP1;Neutrophil activating factor;Neutrophil activating
Observed Band	20kD



Cell Pathway	Secreted.
Tissue Specificity	Chronic myeloid leukemia cell,Kidney,Lung,Lung carcinoma,Neutrophil,Periphe
Function	function:IL-8 is a chemotactic factor that attracts neutrophils, basophils, and T-cells, but not monocytes. It is also involved in neutrophil activation. It is released from several cell types in response to an inflammatory stimulus. IL-8(6-77) has a 5-10-fold higher activity on neutrophil activation, IL-8(5-77) has increased activity on neutrophil activation and IL-8(7-77) has a higher affinity to receptors CXCR1 and CXCR2 as compared to IL-8(1-77), respectively..online information:Interleukin-8 entry,PTM:Several N-terminal processed forms are produced by proteolytic cleavage after secretion from at least peripheral blood monocytes, leukocytes and endothelial cells. In general, IL-8(1-77) is referred to as interleukin-8. IL-8(6-77) is the most prominent form.,similarity:Belongs to the intercrine alpha (chemokine CxC) family.,subunit:Homodimer.,
Background	The protein encoded by this gene is a member of the CXC chemokine family. This chemokine is one of the major mediators of the inflammatory response. This chemokine is secreted by several cell types. It functions as a chemoattractant, and is also a potent angiogenic factor. This gene is believed to play a role in the pathogenesis of bronchiolitis, a common respiratory tract disease caused by viral infection. This gene and other ten members of the CXC chemokine gene family form a chemokine gene cluster in a region mapped to chromosome 4q. [provided by RefSeq, Jul 2008],
matters needing attention	Avoid repeated freezing and thawing!
Usage suggestions	This product can be used in immunological reaction related experiments. For more information, please consult technical personnel.

Products Images



Western blot detection of IL8 in CHO-K1 transfected by IL8-PDGFR fusion protein cell lysate using IL8 mouse mAb (1:500(A)-1:1000(B) diluted).

Indirect ELISA assay for anti-IL8 mouse mAb. Antigen coating concentration: 8ug/ml.